



A Nationally Recognized High School
"U.S. Department of Education"
"On The National Register of Historic Places"

St. Petersburg's Green Devils

DEVIL'S DOINGS

Volume XXXIV Number 4

For the Parents, Students, & Community

January 2019

Principal's Message

"...Committed to providing a first class educational experience..."

Dear Green Devil Families,

I hope everyone had a relaxing and peaceful holiday break. It's hard to believe that this school year is already half over. We have enjoyed many successes here at SPHS both in our classrooms and in our many extracurricular activities. Specifically, we had two students who were named as National Merit Semifinalists. In our athletic programs, Green Devils have excelled in volleyball, golf, cross country and football with several of our student-athletes and teams qualifying and competing in the state playoffs. Our music and drama departments continue to produce superior performances from the outstanding production of "Silent Sky" to the band's many awards from competitions and the Pitchforks' performance at EPCOT's Candlelight Processional this past December. Furthermore, we are extremely proud to announce that our 2018 graduating class had the highest graduation rate in school history with a rate of 94%. I am extremely proud of our students' talents and efforts and I look forward to seeing what the spring semester brings.

I am asking that you please take a few minutes and read through all the valuable information provided in this newsletter. If you have any questions or concerns about your student's preparation moving forward into second semester, please contact us. The Guidance department and administrative team will be conducting parent workshops related to the AP and dual enrollment opportunities as well as course schedule options for the 2019-2020 school year starting this month. Please look for these dates!

Finally, I truly appreciate the parent support that is provided here at SPHS. It is one aspect that makes our school great. Please feel free to call if we can assist your son/daughter in any way as we provide our students with a first-class education!

Go Green Devils!

Sincerely,
Principal Darlene Lebo



PINELLAS COUNTY SCHOOLS

SCHOOL BOARD MEMBERS

Rene Flowers,

Chairperson

Carol J. Cook,

Vice Chairperson

Nicole M. Carr, PhD

Bill Dudley

Joanne Lentino

Eileen M. Long

Superintendent:

Dr. Michael A. Grego, Ed.D.

Pinellas County School Board

301 Fourth St. SW

Largo, FL 33770

Phone: 727-588-6000

Fax: 727-588-6202

Website: www.pcsb.org

Check Out Our Website at: www.pcsb.org/stpete-hs

Please follow us on Twitter @St_PHS



The School Board generally meets on the second Tuesday of each month at 10 a.m. and the fourth Tuesday at 5 p.m. in the conference hall of the administration building, 301 Fourth St. SW, Largo. The public is invited and may speak by signing up at the meeting. The meetings are televised Wednesdays and Thursdays at 6 p.m. for two weeks following the meeting date on WPDS-Ch. 14, Bright House Cable Ch. 14, and Verizon Americast Ch. 14. For information, contact the board office, 588-6402, or information services, 588-6000. For more information about Pinellas County Schools, check out the website at www.pinellas.k12.fl.us.

SPHS Vision -
100% of SPHS students will graduate!

Motto - SPHS
Where tradition meets excellence!

2018-19 STUDENT CALENDAR

Feb. 18, 2019: Pro. Dev. Day - No school for students.
Mar. 7, 2019: End of third quarter.
Mar. 8, 2019: Pro. Dev. Day - No school for students.
Mar. 11 – Mar. 15, 2019: Spring Holidays – No school for students.
April 19, 2019: No school for students.
May 27, 2019: Memorial Day – No school for students.
May 29, 2019: Last day of school.

2018-19 REPORT CARD SCHEDULE

<u>End of the Grading Period</u>	<u>Report Cards Distributed</u>
Dec. 21, 2018	Jan. 18, 2019
March 7, 2019	March 29, 2019
May 29, 2019	June 7, 2019

KNOW YOUR GUIDANCE COUNSELOR

Ms. Harris	Last names A to F	Ext. 2061
Ms. Lowery	Last names G to N	Ext. 2063
Ms. Bordenkircher	Last names O to Z	Ext. 2062
Ms. Johnson	All IB students	Ext. 2060

KNOW YOUR ASSISTANT PRINCIPAL

Ms. Vragovic	(9th-11th) A to K	Ext. 2015
Mr. Yates	(9th-11th) L to Z	Ext. 2016
Mr. Halstead	All Seniors	Ext. 2017
Ms. Lane	All IB Students	Ext. 2018

YEARBOOK AND AD INFORMATION

The centennial edition of NoSoWeEa, the Green Devils' yearbook, is on sale now for \$75 at Balfour.com or in room M-211. It's not too late to get a senior ad, either. A web-only option is available at www.balfour.com through the end of January. After that, all senior ad sales will be closed, so get your celebratory senior ads now! Yearbook sales will be open through May. Direct any inquiries to greendevilsyb@gmail.com and have a great Green Devil year!

STUDENT OBLIGATIONS

Please check your student's Focus account under the Fees and Payments Tab for any outstanding obligations. These fees will remain outstanding in the student's Pinellas County School Focus record. As per District Policy: "Failure to pay fees and fines may result in the denial of participation in the graduation ceremony, athletics, or any other extra-curricular activity." (Policy 6152 – Student Fees, Fines and Charges). Please call the school bookkeeper for more

STUDENTS' DELIVERY OF FLOWERS, BALLOONS, ETC.

With safety in mind, the school cannot accept any type of flower arrangement, balloon bouquets or balloon arrangements for delivery to students. Many times, these gifts are in glass containers which can be broken. In addition, they cause class disruption. Please do not send any type of delivery to students here at school. They will be refused and sent back to the sender. Your understanding and cooperation is greatly appreciated.

SPHS TWITTER PAGE

Do you want up to date info on Saint Petersburg High School right on your phone? Follow us on Twitter @St_PHS

COLLEGE VISITS FOR SENIORS

Do you plan on visiting a college? If so, you must stop by the Main Office, room 101, and pick up a College TDE form. You will need to have all your teachers and parent sign the form and return it to the Main Office three days prior to your visit. Make sure to read the directions on the TDE. You will need to bring back a letter on letterhead from the college you visited, stating the date you attended. The letter will need to be turned in to the Main Office within 2 days of your return. Your absence will then be corrected. College Visits do not count as an absence for exam exemptions.

ATTENTION: GOT LUNCH?

We still have about 200 students that have not submitted their application for Free and Reduced Lunch. We are giving those students lunch, but until they have submitted their application online, they will be responsible for all the charges. If you are unsure if you have submitted an application this year, please email rodriguezgonzalez@pcsb.org and she will check for you. At this time we have over \$5,000 in outstanding lunch accounts. If you haven't filled out an application, do this as soon as possible to avoid additional charges. You can submit your Free and Reduced application online at www.MySchoolApps.com. This needs to be done at the beginning of every school year. Also, if you need to put additional money on your account, visit www.myschoolbucks.com.

GREEN DEVIL'S PANTRY & CLOSET

The Green Devil's Pantry & Closet serves any member of the SPHS family who needs a hand up when life gets in the way! Clients may receive undergarments, socks, toiletries, cleaning supplies, food and school supplies, including book bags. We gladly accept gently used SPHS club or sports shirts, however, because of the size of the Closet, we do not accept any other used clothing, shoes, or formal wear. The sponsor has an ever-changing list of "need now" items. Please contact Tracey Keim 727-709-9841 or Keimt@pcsb.org for donation information. Follow us on FB @GDPantry.

ETHICS BOWL WINNERS

In December, two SPHS Ethics Bowl Teams competed at SPC Clearwater Campus against 12 teams. Please Congratulate our 2018-19 Regional Ethics Bowl winners. The Varsity team of: **Camille Luong, Arielle Noah, Victor Xie, Jack McKyton, Kasha Tyranski** and Varsity Alternates: **Tiffany Zhou and Povilas Pugzlys** won 1st Place, for the 11th year in a row. Our Junior team: **Madeline Garrison, Lydia Silverstone, Jude Singleton, Madison Ferguson, Hana Skipper, Jenny Keen, and Yamira Patterson**, stood strong sweeping 4th place. Our varsity team will compete in a Skype round to clinch an opportunity to represent our Region in the National Competition at UNC Chapel Hill.



Joseph R. Craig, D.D.S., P.A.



Family Dentistry

Joseph R. Craig, D.D.S., P.A.
727-822-3463
 1747 16th Street North
 St. Petersburg, FL 33704

www.CraigDentalCare.com



5650 1st Avenue North
 St. Petersburg, FL 33710

Contact us today to discuss your case.

727-327-1675

www.eminentdomainfla.com

NEED TO USE THE ELEVATOR?

If you ever need to use the elevator at school, you will need to bring in a doctor's note stating how long the elevator will be required. Before the elevator key is issued the student will have to put down a \$20.00 deposit that will be returned by check in the mail once the key is returned. Elevator keys can be obtained in Student Services, room 135.

HAVE YOU MOVED?

Did you know that if the school sends you a letter it will NOT be forwarded to your new address? Please do the following steps to change your address:

1. Go to www.pcsb.org
2. At the top of the page on the right side click on Login.
3. Click on Student Reservation.
4. Type in User Name* and Password*. (This is the same User Name and Password that parents use to log in to Portal/Focus)
5. Click on Change of Address and continue until you reach the end.
6. Bring in your 2 proofs of address to the school to the Main Office Room 101.
 - a. Copy of Lease and a Utility Bill (Electric, Water, Cable) or 2 Utility Bills.

*If you do not know your Username and Password, please stop by the school with your driver's license and we will get one for you. If you should have any issues/questions please give us a call at 727-893-1842, ext. 2008.

ABSENCES

If you are absent from school, a doctor's note, phone call or written excuse from the parent, is required within 48 hours of the absence. Parents may also send an email to excuse their student's absence to StPetersburgHS.Absence@pcsb.org A written excuse should include the student's name, reason for absence, and parent telephone number. A parent may excuse 5 days in a semester. Further absences cannot be excused without a doctor's note. Absences should be for the following reasons: student illness, family emergency, death in family, medical appointments, and religious holidays.

Note: The Florida Legislature has enacted requirements that schools report to the Department of Highway Safety and Motor Vehicles (DHSMV) the names of students who fail to satisfy the attendance requirements. This refers to students who accumulate 15 unexcused absences (excludes out-of-school suspension) within 90 calendar days. Students who fail to satisfy attendance requirements will be INELIGIBLE for driving privileges.

CHECK OUT PROCEDURES

Parents requesting early check-out of their student can write a note and the student can go to Student Services, room 135, that morning to get a Permit to Leave slip. This alleviates any wait time for you when you come to pick up your student. If you call or come in, please understand that we do need time to get your student for you. Please allow at least 30 minutes. This will give the school the opportunity to look up the student's schedule and send for them to meet you in the front office. Parents, it is important that we check the driver's license of anyone picking up your student early from school. This will be done to ensure the safety of your child.

DROP-OFF AND PICK-UP PROCEDURES

Thank you to all the parents who are using the Car Line to drop your students off in the morning and to pick them up in the afternoon. Student safety is our number one priority and using this designated area ensures that all students are out of harm's way.

Please DO NOT enter the Student Parking lot to drop off your child. Students who are dropped off in the student parking lot will receive a detention. If you want to avoid the car line in the morning, you may want to consider turning on to 7th Avenue from 28th Street and dropping students off in front of the gate to the Maintenance area. We do not recommend dropping students off across the street from the school and please do not stop on 5th Avenue and let your child out of the car.

The safe drop-off and pick-up locations are the car circle by Devil's Drive on 27th St. off of 5th Ave. as well as 28th St. and 7th Ave. Thank you so much for your cooperation! Working together we can keep St. Pete High safe!

PARKING AFTER SCHOOL AND NIGHTS

All students and parents must park in the student parking lot or devil's drive for any after school events or any nightly sporting events. Please do not park in the gated area next to the gym, known as the service entrance. This area is only for staff members with keys, if you park there your car will get locked in.

MUSICIANS SHINE IN BAND ENSEMBLES

Second semester is shaping up to be an exciting one for the St. Pete Band program. "Our Winter guard has been hard at work preparing their competition show 'Bright, Sun Shiny Day' which they will debut at Gaither High School on January 19," said Band Director Katie Aucremann. The Wind Symphony and Jazz Band will each perform at their district assessments in February and look for a Solo and Ensemble recital in early February in the Little Theater. 2019 looks to be an exciting year of growth for our Green Devil Ensembles. We'd love to have you join us!

The Green Devil Marching Band had a fantastic competition season:

- Seminole Sound: Caption Awards: Brass, woodwinds, percussion, drum major, 2nd place in 1A Division
- Tarpon Outdoor Music Festival: Caption Awards: Visual effect, brass, color guard, percussion, general effect, Grand Champion in 1A.
- East Lake Classic: Caption Awards: Music, percussion, 2nd place in 2A.
- MPA (Marching Performance Assessment): Superior (highest rating).

The Band ensembles also shared their talents during the holidays. Several dozen SPHS students led by the Marching Band and the band's Winter Guard participated in the City of St. Petersburg's annual Santa Parade on Saturday November 24.

The Wind Symphony, Chamber Strings, Jazz Band and Marching Band ensembles added to holiday festivities with their Winter Concert on December 13 in the auditorium, followed by a dessert reception. Please email Ms. Aucremann (aucremannk@pcsb.org) for more information about the Band program.



"DEVIL'S DOINGS"

January 2019

Published four times per year
Pinellas County School Board
525 Pennsylvania Avenue
Palm Harbor, FL 34683
Issue # 4

Here to help you experience a lifetime of good health.

A primary care physician can be your partner in good health, providing preventive care and checkups, treatment when you're ill, and the management of many chronic conditions. Bayfront Health Medical Group has dedicated primary care providers located throughout the community. Same-day appointments available, and many accept walk-ins.

To schedule an appointment, call **844-4BH-BHMG (844-424-2464)**.



Bayfront Health
Medical Group
BayfrontDoctors.com

Ault's Driving School

Save on Behind-The-Wheel Instruction

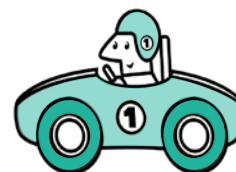
Learn to Drive!
We go the extra mile!

- All instructors are State certified
- Possible insurance discount

Call today to schedule!

(727) 547-3488

www.AultsTrafficSchool.net



"Going the extra mile for over 48 years."

COUNSELORS' CORNER



ORAL AND MAXILLOFACIAL SURGERY

KENYON M. FORT, D.D.S.

Diplomate, American Board of Oral and Maxillofacial Surgery

"Specializing in Wisdom Teeth Extractions and Dental Implants"

Most Insurance Accepted

7135 Dr M L King Jr Street North
Saint Petersburg, FL 33702

727.525.5455

www.fortoralsurgery.com



**GIVE YOUR CHILD AN
ACADEMIC
ADVANTAGE!**

Kumon Math & Reading of

ST. PETERSBURG - EAST

2538 Dr. ML King Jr. Street N

St. Petersburg, FL 33704

727.822.4016

kumon.com/st-petersburg-east

KUMON

2 LOCATIONS IN ST PETE!



**BUY
SELL
TRADE
REPAIR**

2785 54TH AVE N.
727 753 9435
6151 CENTRAL AVE
727 314 1337

**GET 10% OFF
WHEN YOU
MENTION THIS
ADVERTISEMENT**

KOPPER KITCHEN
Since 1976

Breakfast & Lunch

Diner Style Restaurant
Fresh Salads, Homemade Desserts,
and Vegetarian Options!

5562 Central Ave St. Petersburg, FL
Carry out: 727-345-6339

UPCOMING EVENTS:

PSAT Parent/Student Information Night will be held on **January 22nd at 6 p.m.**

COLLEGE NIGHT:

Save the date! 2019 College Night will be Wednesday, February 20th in the auditorium. College admissions representatives will be present to share information about their college/university and answer any questions. Please plan to attend.

CURRICULUM FAIR FOR ALL CURRENT SPHS STUDENTS:

SPHS will host the Curriculum Fair for all current students to preview possible courses for the 2019-2020 school year. The event will take place on Wednesday, January 30th beginning at 6:00 p.m.

BRIGHT FUTURES:

The Florida Bright Futures website opened on October 1, 2018 and ALL seniors are asked to register. ONLY seniors should apply by going to: www.floridastudentfinancialaid.org. Please take advantage of this free money to pursue educational opportunities.

REMEMBER: NO APPLICATION=NO FLORIDA BRIGHT FUTURES \$

COMMUNITY SERVICE HOURS:

Students who would like to earn community service hours need to come to 221 and pick up the forms prior to starting their volunteer hours. Please have them signed and turned into your counselor by the preferred deadline of May 3rd. Students who will be working on their hours over the summer also need to have their forms turned in by the preferred deadline of May 3rd. Seniors must have their completed forms turned in by graduation so they may start receiving benefits for their fall semester of college.

Appropriate test scores are necessary to qualify for Florida Bright Futures.

Please visit the following test websites to register:

SAT: www.collegeboard.com ACT: www.actstudent.org

HIGH SCHOOL OR CEEB CODE: 101530

TEST PREPARATION: SATPractice.org www.khanacademy.org

CREDIT RECOVERY:

Credit recovery is available on Saturday mornings in the Media Center via APEX for ALL STUDENTS. Students can also work on APEX during lunch (11:37 – 12:12) in the Academic Resource Center (ARC) Monday – Friday. Hours are from 9am – 12pm. Night school is also available for students, age 16 and older, who have earned an "F" in a course. The student must meet with their counselor to fill out the district form BEFORE they go to a night school center. Not all classes are available. *Athletes should check with their counselor regarding credit recovery that aligns with NCAA eligibility requirements.*

COLLEGE VISITS:

Juniors and seniors looking for their "perfect fit" for higher education are encouraged to take college visits. They should go to the Main Office to pick up and fill out a TDE form PRIOR to the trip. Proof of the visit must be provided to Ms. Ervin in the Main Office upon return to receive an excused absence. A total of 4 "College Days" are allowed. For IB students, please pick up your TDE from Ms. Derrickson in the IB Office.

PSAT FOLLOW UP:

All 9th, 10th, 11th graders took the PSAT on October 10, 2018. The scores are available now online and can be accessed following the directions listed below. Counselors will be following up with students during classroom visits in January and February.

- Go to studentscores.collegeboard.org.
- Click "Sign Up" under the Sign In spaces.
- Input your personal information under "Create Your Student Account."
 - > Once students have set up their College Board account, they will need to log in to the account to access score information. Students should enter their username and password (at studentscores.collegeboard.org). They will be redirected to their SAT Suite of Assessments score-reporting portal, with their most recent test showing first.
 - > If their most recent test is missing, they can use the "Missing Scores" link to update their personal information and provide their access code or student ID that will match their scores to their account.
- When students log in to their College Board account, they will be taken to a dashboard (entry) screen that includes their scores, links to SAT practice, AP and core course work, and information about Student Search Service and career profiles.
- The first thing they will see on the dashboard is their most recent scores. The total score for PSAT/NMSQT ranges from 320 to 1520. It is the sum of their Math section score added to their Evidence-Based Reading and Writing section score. When students click "View Details," they will be taken to their detailed score reports.

DR. ROWE'S
DENTAL SPECIALTY GROUP

(813) 968-9641 Tampa

(727) 327-7151 St. Pete

(727) 538-3033 Largo

(352) 777-6484 Dade City

- No down payment except for invisalign
- In house financial plans
- No credit checks required



Dr. Michael W. Rowe
(727) 327-7151 • drroweortho.com

**AN ORTHODONTIC PRACTICE
FOR OVER 35 YEARS**



5121 Ehrlich Rd., Suite 110, Tampa FL 33824
3880 5th Ave. N. St., Petersburg, FL 33713
2700 East Bay Dr., Suite 102, Largo FL 33771
37149 Florida Avenue, Dade City, FL 33525

Crowding • Crossbite • Deep Overbite • Spaced Teeth • Missing Teeth • Retrusive Teeth • Protrusive Teeth • TMJ Dysfunction • Facial Growth Problems • Tooth Alignment for Crown and Bridge

DUAL ENROLLMENT PROGRAM AT ST. PETERSBURG COLLEGE

St. Petersburg College offers college classes to qualified high school students in Pinellas County at no cost to the student. These courses allow students to earn credits toward a high school diploma and a college degree. Dual enrollment course grades are recorded to the student's high school transcript and his/her permanent college transcript. Therefore, students must give their best performance in dual enrollment coursework because the resulting grades can greatly impact post-secondary education opportunities, scholarship opportunities and financial aid eligibility.

Courses on the Dual Enrollment Approved Course List are available on SPC campuses and some local high school campuses. Dual enrollment courses that are offered by a credentialed instructor at a student's high school must be taken on the high school campus.

To take Dual Enrollment classes through SPC during the first semester, students must:

1. See their school counselor to see if they qualify and obtain an ID number for SPC.
2. Take the PERT, SAT, or ACT prior to obtaining permission to take dual enrollment courses.
3. Students eligible for on campus Dual Enrollment courses will have an opportunity to register for on campus dual enrollment courses during the in-house registration in the month of February. Please see your School Counselor for more information regarding eligibility requirements for Dual Enrollment.
4. Obtain a completed Dual Enrollment Permission Form (for off campus classes.)
5. Register for the class(es) through the SPC Dual Enrollment Office (for off campus classes) no later than one week after the last day of school.
 - To be eligible to take an academic dual enrollment course a student must have a minimum unweighted cumulative GPA of 3.0. To be eligible to take a career dual enrollment course, a student must have a minimum unweighted cumulative GPA of 2.0.

STUDENTS WHO ARE INTERESTED IN BEING A FULL-TIME EARLY COLLEGE OR EARLY ADMISSION STUDENT MUST COMPLETE THE APPLICATION AND SUBMIT TO THE EARLY COLLEGE PROGRAM OFFICE BY 2:00pm on February 8, 2019.

Full-time EARLY COLLEGE OR EARLY ADMISSION STUDENTS must follow steps 1 – 3 listed above to enroll. Also, students eligible for EA/ECP will receive an information meeting notice from SPC. Interested students should visit SPC website – www.spcollege.edu for more information.

DUAL ENROLLMENT AT PINELLAS TECHNICAL COLLEGE

High school students attending Pinellas Technical College (PTC) have the opportunity to be dual enrolled in post-secondary courses tuition free! These courses give students credits toward a high school diploma and a career technical certificate. Hours completed at PTC may also transfer as credit hours to local and state colleges.

Courses are available on both the Clearwater and St. Petersburg campuses. Following is a list of classes currently available on each campus:

CLEARWATER CAMPUS:

- Accounting Operations
- Administrative Office Specialist
- Automotive Service Technology
- Cabinetmaking
- Commercial Foods/Culinary Arts
- Computer Systems & Info. Tech
- Cosmetology
- Digital Design
- Electricity
- Electronic Tech.
- Machining Technologies
- Medical Administrative Specialist
- Medium/Heavy Duty Truck & Bus (Diesel)
- Network Support Services
- Web Development

ST PETERSBURG CAMPUS:

- A/C, Heating & Refrigeration
- Automotive Collision Repair & Refinishing
- Automotive Service Technology
- Building Construction
- Commercial Foods/Culinary Arts
- Commercial Photography
- Cosmetology
- Digital Video Production
- Drafting
- Electricity
- Landscape and Turf Management
- Medical Administrative Specialist
- Network Support Services
- Pharmacy Technician
- Plumbing Technology
- Welding Technology

Dual enrollment students will be present in the same class as adult students; therefore, a higher level of maturity, independence, and initiative is important for student success.

Students who are registered for dual enrollment courses will have three grades per semester recorded on their high school transcript. Therefore, students will need to work hard and commit to academic excellence as they perform at their best with the required PTC coursework. Please keep in mind that the resulting grades can greatly impact postsecondary education opportunities and/or scholarship opportunities.

In order to take Dual Enrollment classes at PTC during the fall and spring semester, students must:

- Be at least 16 years old and entering their junior or senior year in high school
- Have a minimum cumulative unweighted GPA of 2.0, or 2.5 GPA for medical-related programs
- Show responsibility through high school attendance and behavior.
- Obtain a Dual Enrollment Application from their high school counselor.
- Return completed application to their high school counselor, with all necessary signatures. *Once the PTC counselor has received the application, the student will be contacted regarding a shadowing date.
- For more information, regarding dual enrollment, please contact the Clearwater campus at (727) 538-7167 or the St. Petersburg campus at (727) 893-2500.
- Transportation will be provided for students attending the St. Petersburg PTC campus only.

CALL TO JOIN OUR FAMILY TODAY!



St. Petersburg Eye Care Specialists

929 1st Avenue North
St. Petersburg, FL 33705
www.specseyedoc.com

Dr. Tara Koza Camargo

A graduate of St Pete IB program

(727) 898-3155

Local Family Eye Care • Taking Family Eye Care to the Next Level

OVER 1000 FRAMES TO CHOOSE FROM!

Taking All Vision Insurances

Support Small Local Business



Order Online at PAPAJOHNS.COM
Or Call (727) 821-7272



The Family Dentist
Changing Lives One Smile at a Time!

Dr. Ron O'Neal &
Dr. Kenton Brandimore

(727) 527-7207
7401 DR. MLK JR. ST. N.

TampaBayFamilyDentist.com

Serving all ages
with one goal:
We'll make you SMILE



MIDWAY
SERVICES

PLUMBING • ELECTRIC • AIR CONDITIONING

CALL NOW FOR FREE ESTIMATE!*

1-800-MIDWAY-5

www.MIDWAYSERVICES.com

CMC1249534 EC13003598 CGC1508455 CFCA25591

*During normal business hours only.

Experienced Bankers.
Local Decisions.



IBERIABANK

Samantha McDermott

Vice President - Branch Manager
(727) 201-5533

samantha.mcdermott@iberiabank.com

www.iberiabank.com

Member
FDIC

SENIOR CLASS INFORMATION

Graduation date has been set. It is Friday, May 24th at 1:00pm at Tropicana Field.

We are currently collecting senior dues in room 119. Below you will find a breakdown of the senior dues (fees) for this school year. We currently have about 450 seniors listed as graduating, so we used that as the main number in determining individual costs

You can pay with cash, money order or a check made out to St. Pete High School. Credit cards will be accepted. More information about payment with a credit card is on our school website.

Senior dues cover all MANDATORY costs. These costs include, but aren't limited to the following: (any items listed below are for the graduates to keep)

- Cap, Gown and one tassel
- Medallion to be worn at graduation
- Diploma Cover
- Senior Dinner
- Graduation Ceremony
- DVD Of Graduation Ceremony to be picked up in office during summer

TOTAL OF EXPENSES DUE PER GRADUATE AT THIS TIME IS \$120.00

Any questions please speak to Mrs. Anderson in room 119 or email her at andersonand@pcsb.org.

As more information comes out and more activity dates are set, we will post for seniors to check. Please periodically log onto our school website at <http://www.pcsb.org/stpete-hs> for updates.

GRAD BASH AT UNIVERSAL STUDIOS

- Tickets go on sale January 8th through January 31st in room 119.
- The cost is \$132.00 per person and includes the bus ride there and back, plus entrance to both Universal Parks and all concerts in the parks.
- **The date of Grad Bash is April 5th, 2018.**
- You must ride the bus with the school, no individual cars allowed.
- Information sheet/TDE will be given out when you purchase your ticket.
- There is a Universal Studios Dress Code. If you have any questions about that, it is attached to this sheet and will be given out with ticket purchase.
- SPHS will conduct a security and dress code screening prior to departure.
- No refunds once a ticket is purchased.

SENIOR GRADUATION ITEMS

If you are interested in purchasing any additional graduation items, you can go directly to Herff Jones website. The link is www.highschool.herffjones.com and includes access to class rings, graduation announcements and more. None of these are required, but they are offered in case your family wants to purchase them.

PROM 2019

Save The Date: The Prom will be on April 12th at the Coliseum this year. The theme will be Havana Nights. The Prom is for juniors and seniors only, underclassmen will not be permitted to attend. Guests must be juniors, seniors and under 20 years old as of April 12, 2019. Tickets will go on sale Monday, March 18th through Friday, April 12th at school. There will not be any tickets sold at the door. More information to come as we get closer to the date.

The
Princeton
Review®

**Better Grades.
Better Scores.
Better Schools.**

The Princeton Review wants to help get you into your dream school and offer St. Petersburg High School students a **15% discount** on select products with code* **STPETE15**.

Visit PrincetonReview.com/StPeteHS to enroll and save!

SAT® | ACT® | PSAT® | AP® | SAT Subject Tests™
Homework Help | College Admission Counseling

*Student must use the promo code at the time of enrollment in order to receive the discount. SAT® is a trademark registered and owned by the College Board, which is not affiliated with and does not endorse this product. All tests are registered trademarks of their respective owners. None of the trademark holders are affiliated with The Princeton Review or these products. The Princeton Review is not affiliated with Princeton University.

LEGALLY BLONDE



The Musical™

Dates: March 28, 29, 30 | Time: 7:00pm in SPHS auditorium

For more information visit www.Stpetehightheatre.com

FREE TUTORING

- Tutoring help is available in math, science, social studies, English and reading after school.
 - Apex Credit Recovery is offered on Saturday mornings from 9-noon.
- Please see the chart below for times and subject areas offered.

	After School 2-3pm	After School 2-3pm	After School Room 201E Times below	After School Room B215 Times below	Resource Center - During Lunch	Media Center 9am - Noon
MON.	Math - Trunk SS - Bryant	ACT/SAT - Alexander Eng. - Pickett		APEX 2-4pm	APEX Tutoring: Math, SS, Eng.	
TUES.				APEX 2:30-4:30pm	APEX Tutoring: Math, SS, Eng.	
WED.	Math - Trunk SS - Bryant	ACT/SAT - Alexander Eng. - Pickett	APEX 2-4pm		APEX Tutoring: Math, SS, Eng.	
THURS.	Math - Trunk SS - Bryant	ACT/SAT - Alexander Eng. - Pickett	APEX 2-4pm		APEX Tutoring: Math, SS, Eng.	
FRI.					APEX Tutoring: Math, SS, Eng.	
SAT.						APEX Tutoring: Math, SS, Eng.

STUDENTS OF THE MONTH

Congratulations to our PTSA Students of the Month sponsored by the Historic Kenwood Association.



SEPTEMBER:

Aidan Roland, Principal Lebo and Joanne Lioe



OCTOBER 2018

Kendra Anglin, Principal Lebo and Le Andre Green



NOVEMBER 2018

Emma Haraminac, Principal Lebo and Marquez Summers

**Sick?
Flu Symptoms?**

Skip the wait!

FAST TRACK URGENT CARE

- Accommodating Care
- Fast Care
- Convenient Care
- Quality Care

3252 66th St. N. • St. Petersburg, FL 33710

FastTrackUrgentCare.com

Create a Fast Pass reservation to secure your spot in advance by visiting

FastTrackUrgentCare.com/FastPass
or call 813.925.1903

Open 8 a.m. to 8 p.m. Daily

Do something today your future self will thank you for...

St. Pete Dance

Ballroom • Latin • Country

**INTRODUCTORY SPECIAL
2 Lessons for \$39**

(727) 280-6962
stpetedance@gmail.com
3138 3rd Ave N

GREEN BENCH DENTAL

ST. PETERSBURG FL

Dr. Lauren Dupre Krauser
Dr. Mary Ann Pittman

(727) 381-2809

Welcoming New Patients!

greenbenchdental.com | 1015 58th Street North



A Nationally Recognized High School
 "U.S. Department of Education"
 "On The National Register of Historic Places"



Non Profit Organization
 US Postage Paid
 Orlando, FL
 PERMIT # 2346

Pinellas County Schools - Region I
 St. Petersburg High School
 2501 5th Avenue North
 St. Petersburg, FL 33713

2019 BASEBALL SCHEDULE

February 27	@ Gibbs	7pm
February 28	vs. Manatee	3:30
March 1	@ Palm Harbor	4pm
March 5	@ Seminole	7pm
March 7	vs. Boca Ciega	4pm
March 8	vs. Lakewood Ranch	4pm
March 10-15	@ Ft. Lauderdale	TBA
March 18	vs. IMG	4pm
March 21	vs. Osceola	4pm
March 26	@ Countryside	7pm
March 27	vs. Braden River	4pm
March 29	vs. Countryside	4pm
April 4	vs. Dixie Hollins	4pm
April 9	@ Pinellas Park	7pm
April 10	vs. Seminole	4pm
April 17	vs. East Lake	4pm
April 19	@ East Lake	7pm
April 23	@ Northeast	7pm
April 26	vs. Pinellas Park	4pm
April 30	vs. Lakewood	4pm
May 1	@ IMG	6pm

*All dates subject to change and times TBA

DISTRICT THESPIAN FEST RESULTS 2018

CRITIC'S CHOICE HONORABLE MENTION: Best in Show (SUPERIOR)

Duet Musical - David Eaton Jr. and Seth Yeager

ALL STAR CAST WINNER:

One Act - Lamya Benslimane

SUPERIORS:

Solo Musical - David Eaton Jr.

Duet Musical - Jady Gonzalez and Connor Mikuta

Small Group Musical - Weidenfeller & Co.

Small Group Musical - Eaton and Co.

Monologues - Mason Weaver

EXCELLENTS:

Solo Musical - Elizabeth Rau

Solo Musical - Jaiden Jones

Solo Musical - Sionna Monte

Duet Musical - Nellie Rettig and Lindsay Weidenfeller

Small Group Musical - Rosen & Co.

Monologues - Betsy Johnson

Duet Acting - Mason Weaver and Seth Yeager

Duet Acting - Rachel Gadoury and Taylor Agee

Ensemble Acting - Leavitt & Co.

Pantomime - Athena Chaplowski, Jaiden Jones and Sionna Monte

Costume Design - Alexandra Leavitt

Playwriting - Alexandra Leavitt

ONE ACT: (Theatre Honors Class)

CAST: Jaiden Jones, Jayla Blair, Lamya Benslimane, Brandon Zabala, Georgia Rosen

TECH: SD - Kayla Schleich, Leah Colon, Ray Andino, Ivy Jones, Madison Nielsen, Isabella Bodnar, Rya Weiss, Betsy Johnson, Willow McCalpin



ENGLISH HONOR SOCIETY

Congratulations to the following 2018-19 English Honor Society members.

Jada Amis	Alexandre Bordas	Hannah Davis	Sophia Hirst	Shannon Leary	Clare Meyers	Erin Reynolds	Emma Tapp
Ellie Anderson	Barbara Brannon	Katelyn Disler	Mackenzie Holden	Alexandra Leavitt	Devon Miller	Kara Robinson	Tuyern Tran
Alexandra Andonaides	Brittany Browy	Sophie Doddridge	Ruth Iglehart	Anslee Long	Isabella Myers	Adam Rosen	Paige Van Middlesworth
Nadin Antonova	Madison Brunson	Hadassah Eborda	Dana Ireland	Camille Luong	Makenna Myrick	Evia Rutkis	Sophia Vesely
Ella Babb	Jamie Chau	Hailey Emerson	Kristin Javate	Lauren Magenheimer	Vina Molleti	Abi Scribano	Celina Vo
Richard Bailey	Erin Codding	Madison Fernandez	Claudia Johnson	Pooja Manjakandy	Mary Musselman	Mayur Shah	Alina Vongsavath
Carly Baker	Emma Conover	Mary "Katie" Finch	Isabella Koeut-Futch	Myriam Marc	Katherine Nelson	Claire Shukys	Amaya Waters
Olivia Beaver	Lauren Copenhaver	Alexa Goldberg	Killian Kingsley	Catherine Marshall	Mackenzie Pyhel	Libby Smith	Jade Wyatt
Darshna Bhatt	Natalie Coyle	Layne Griffith	Jillian Kuusela	Elizabeth Martynov	Madison Pyhel	Lilly Spayde	Victor Xie
Emma Borchuck	Ja'Kaylah Danford	Rehna Halprin	Rachel Landwehr	Mia McSheffrey	Olivia Rawls	Layla Sumilang	